

BlueEyes[®]

SCT

SES Control Terminal

Operation Manual

Version 1.11

2015/11/06

www.BlueEyesTech.com



Operation manual

□ SCT

Thank you for using the product of BlueEyes Technology.

The manual will introduce the product of BlueEyes Technology. Please read the manual before you start using the product.

Though the information in the manual has been verified before publish, the actual specification should be based on the actual shipment. BlueEyes Technology doesn't have to guarantee, proclaim or declare for the content, along with other purpose. In addition, the product specification and information that mentioned in the manual is for reference only. The content might be update at any time without notice. If there is any mistake of the information, including software, firmware, and hardware that mentioned in the manual BlueEyes Technology has no responsibility for the mistake.

Please reach BlueEyes website to get the upgrade of the product specification, our company will not notice you. If you want to get the latest product information, operation manual, firmware, or you have any question to the products of BlueEyes Technology, please contact your local agent or go to the official website of BlueEyes Technology for further information.

It is not allowed to copy/ use the content or to change the information and publishing of the manual without BlueEyes Technology's written consent.

Copyright 2015 BlueEyes Technology Inc. All Rights Reserved.

BlueEyes Technology Corp.

Add: 7F-3, No.200, Sec. 4, Wenxin Rd., North District, Taichung City 40462, Taiwan

TEL: +886 4 2297 0977 ext.293

Fax: +886 4 2297 0957

E-mail : sales@blueeyestech.com

Website: www.BlueEyesTech.com



Index

1. Introduction.....	4
1.1 About SES ultimate	4
1.2 Upgrade to SES ultimate.....	4
2. Android version	6
2.1 Functions	6
2.2 Installation system.....	6
2.3 Install	6
2.4 Operating interface	7
2.4.1 Choose SES	7
2.4.1.1 Add SES.....	7
2.4.1.2 Modify SES.....	9
2.4.1.3 Delete SES.....	9
2.4.2 List of classroom.....	10
2.4.2.1 Click start & click finish.....	10
2.4.3 Classroom	11
2.4.3.1 Phrase.....	12
2.4.3.2 Set finishing time.....	12
2.4.4 System	13
2.4.4.1 System info	13
2.4.4.2 Edit phr.	14
2.4.4.3 Notification setting.....	14
2.4.4.4 Logout.....	15
3. PC version	16
3.1 Functions	16
3.2 Installation system.....	16
3.3 Install	16
3.4 Operating interface	19
3.4.1 Phrases setting	20
3.4.2 Class information.....	20
3.4.2.1 Phrase.....	21
3.4.2.2 Modify finish time	21
3.4.3 About SCT	22

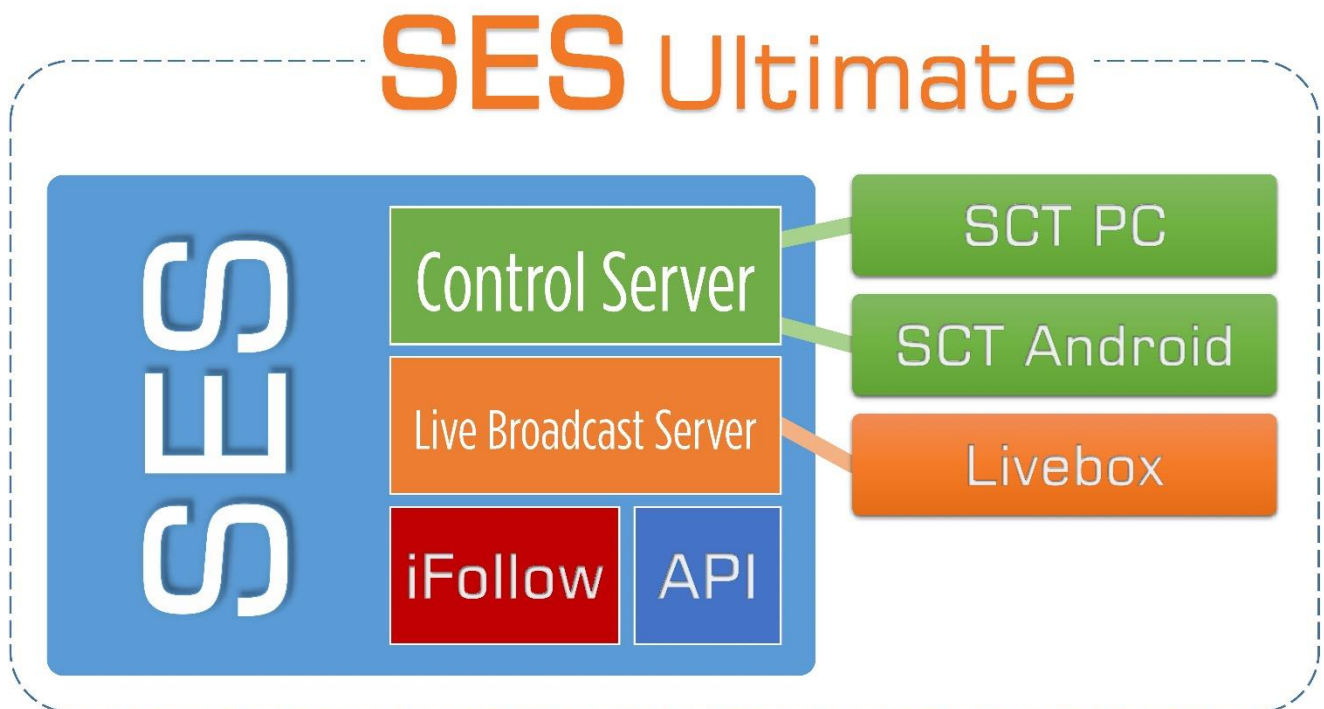
3.4.4 SES time.....	22
3.4.5 Logout.....	22
4. Q&A.....	23
【Question 1】 How to add SCT connecting rule on Windows 7 fire wall	23

1. Introduction

SCT is a remotely control system. It must use on SES ultimate version. The SCT can be installed on smartphone or tablet PC. It can surveillance recording status also control the recording Synchronize timetable, authorization for every login account, common phrase, timing for finish class, reminder for finish class or disconnection, status of CPU, memory and disk, iFollow support and QR code support...these are useful functions of SCT.

1.1 About SES ultimate

Before using SCT mobile or PC version, please upgrade to SES ultimate which has a new function---SCT Server.



1.2 Upgrade to SES ultimate

Upgrade to SES ultimate by following these steps, and start to use SCT.

- Backup SES settings
- Shutdown SES

- Change USB Key
- Turn SES on
- Update SES software
- Reset SES settings
- Enable SCT from SES interface
- Windows adding rules (Go to chapter 4)
- Start SCT mobile version or PC version

2. Android version

2.1 Functions

- Support Android smartphones and tablets
- Support 17 mobile and tablet devices
- Up to 5 SES managing
- Auto renew recording status
- Authority limits of login permission
- Relative information setting
- Phrases setting
- Customized timeframe
- Logout reminder
- SES status check
- Support iFollow
- Quick QR code setup
- Download from Google Play

2.2 Installation system

SCT has to be installed on Android version 4.0 or newly version.

2.3 Install

You can install SCT at Google Play.

Step 1: search “BlueEyes Technology SCT” at Google Play.

Step 2: click to download “BlueEyes Technology SCT”.

Step 3: after installation, you can start using it.



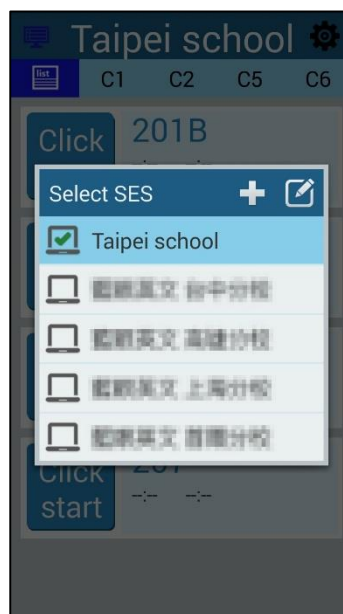
Please download great fire wall software when you in China.

2.4 Operating interface

You can set list of classroom, classroom info and system here.

2.4.1 Choose SES

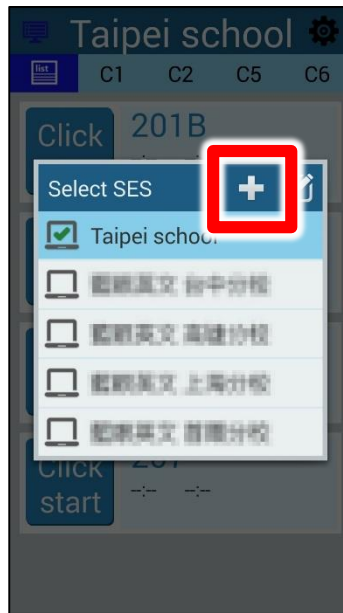
Choose the SES you want to control, you can set other information of SES as well.



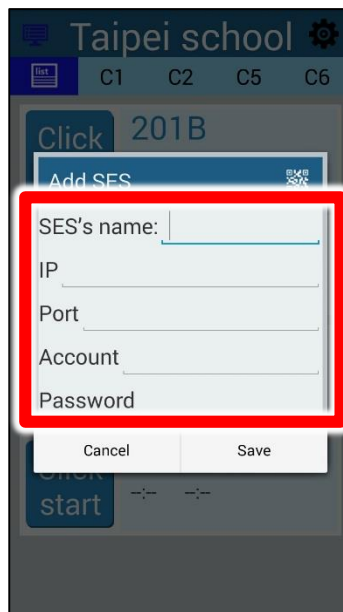
2.4.1.2 Add SES

Click 「+」 on the right to add SES. Remember to enter name of SES, SES IP, Port, Account and Password.

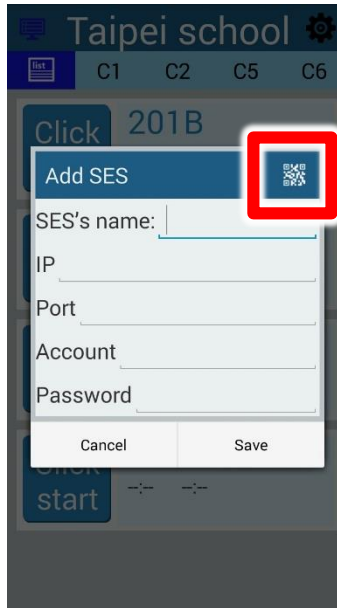
Step 1: click 「+」 on the right bottom.



Step 2: Enter SCT name, IP, Port, Account and Password.

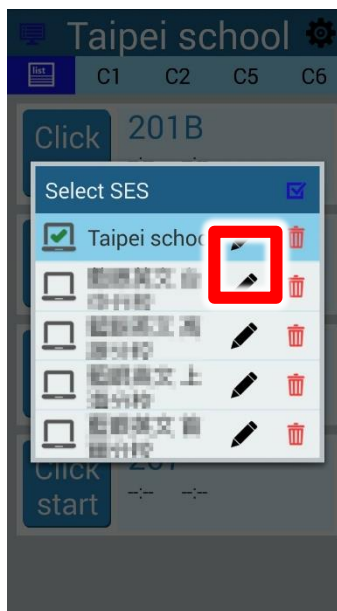


Step 3: you can click the sign of QR code to scan the information of SCT.



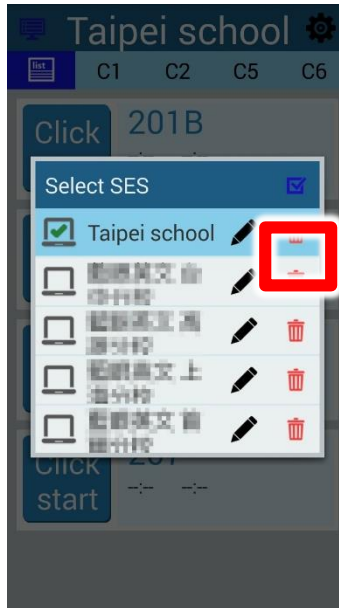
2.4.1.3 Modify SES

Click the pan sign to modify information of SES.



2.4.1.4 Delete SES

Click trash can sign to delete SES.



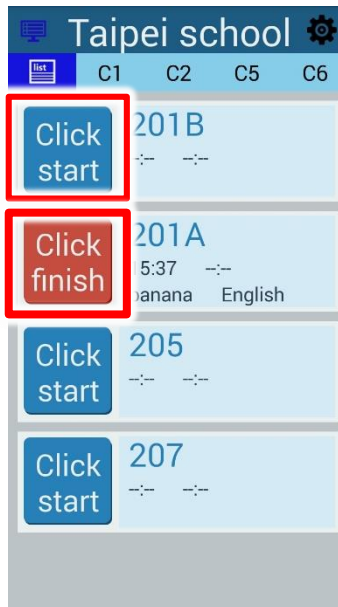
2.4.2 List of classroom

It shows the information about classroom, including click start, click finish, name of classroom, start and finish time, class and unit.



2.4.2.1 Click start & click finish

Red stands for recording; blue stands for after class.



If cameras are the same group, name of classroom will be name of group.

2.4.3 Classroom

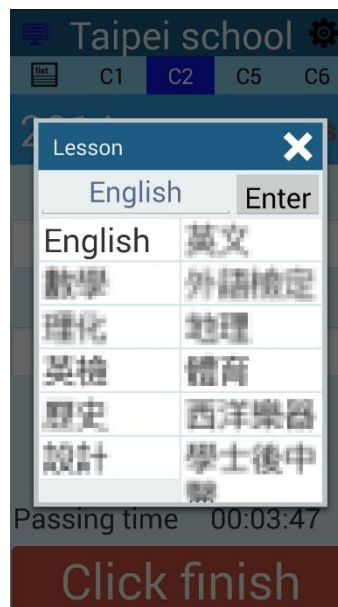
It shows the information about classroom, including name of classroom, status, lesson, unit, teacher, class, start and finish time, click start and click finish.



-
- | | |
|---|---|
| A | Name of classroom |
| B | Status of classroom |
| C | Lesson, unit, teacher, class, start time, finish time and passing time. |
| D | Click start is to start recording; click finish is to end recording. |
-

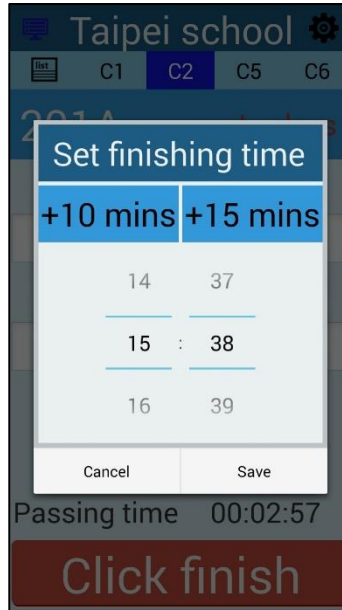
2.4.3.1 Phrase

When you go to lesson, unit, teacher and class. There is a phrase window which you can set the words usually used.



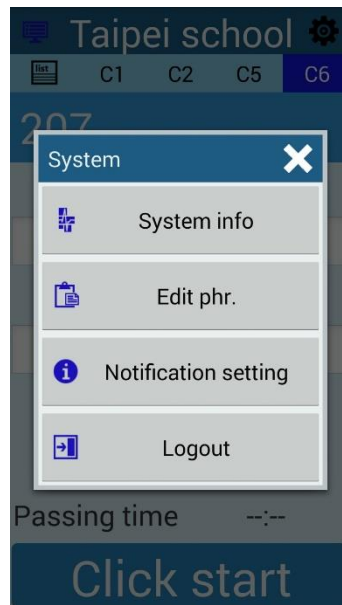
2.4.3.2 Set finishing time

You can set the ending recording time here.



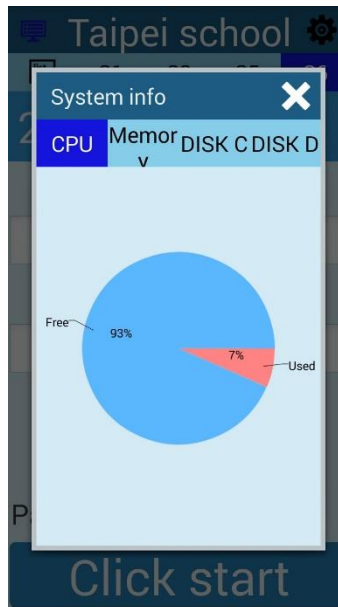
2.4.4 System

It shows system info, edit phr., notification setting and logout.



2.4.4.1 System info

It shows the status of CPU, memory, DISK C, DISK D.



2.4.4.2 Edit phr.

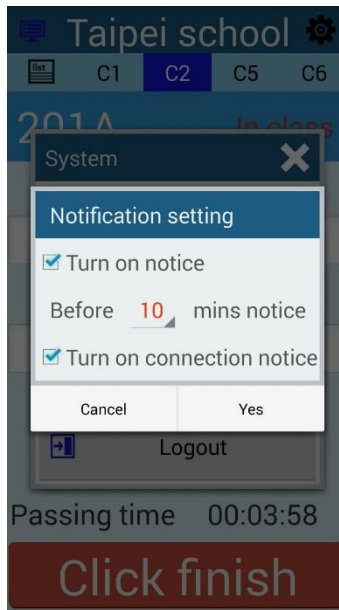
You can edit phrase here.

Lesson	Unit	Teacher	Class
English	英文		
數學	外語檢定		
理化	地理		
英語	體育		
歷史	西洋史		
設計	華語		
高普考	鐵路特考		
初等考試	自然與生 活科學		
社會	國學		

Add lesson phr.

2.4.4.3 Notification setting

It shows turn on notice and turn on connection notice.



2.4.4.4 Logout

You can logout SCT here or login other devices.

3. PC version

3.1 Functions

- Support Windows7/ 8
- Easy to control SES recording
- Authority limits of login permission
- Password protection
- Support 17 PCs
- Auto renew recording status
- Phrases setting
- Support iFollow
- Up to 5 SES managing

3.2 Installation system

Make sure your computer with Microsoft Windows 7 or 8 and already upgraded to SES ultimate version.

3.3 Install

Please get the download website from our staffs and perform Setup file.

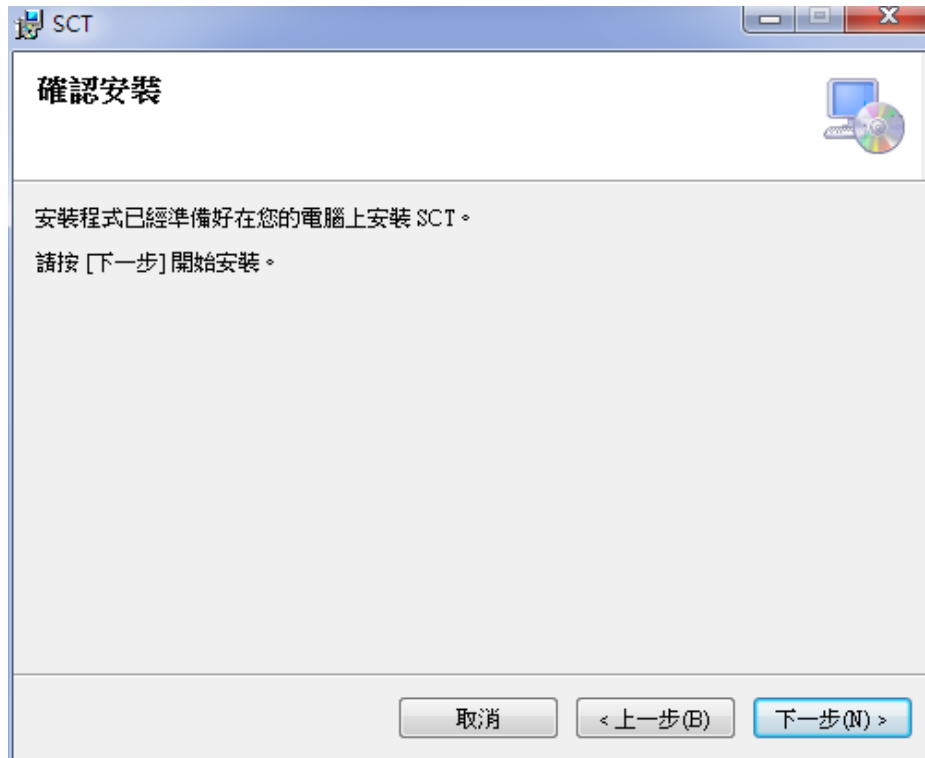
Step 1: install remotely control software and click next.



Step 2: choose the location.



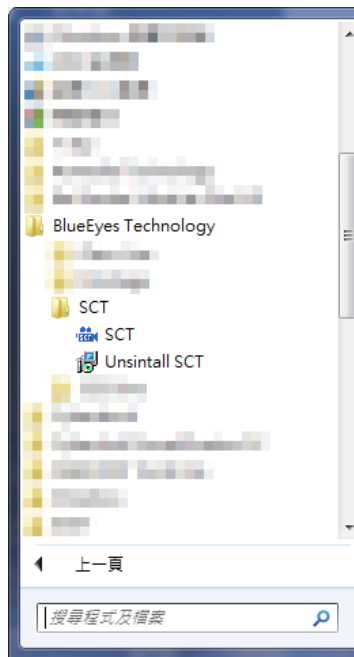
Step 3: click next to start installation.



Step 4: close the window after finish installation.

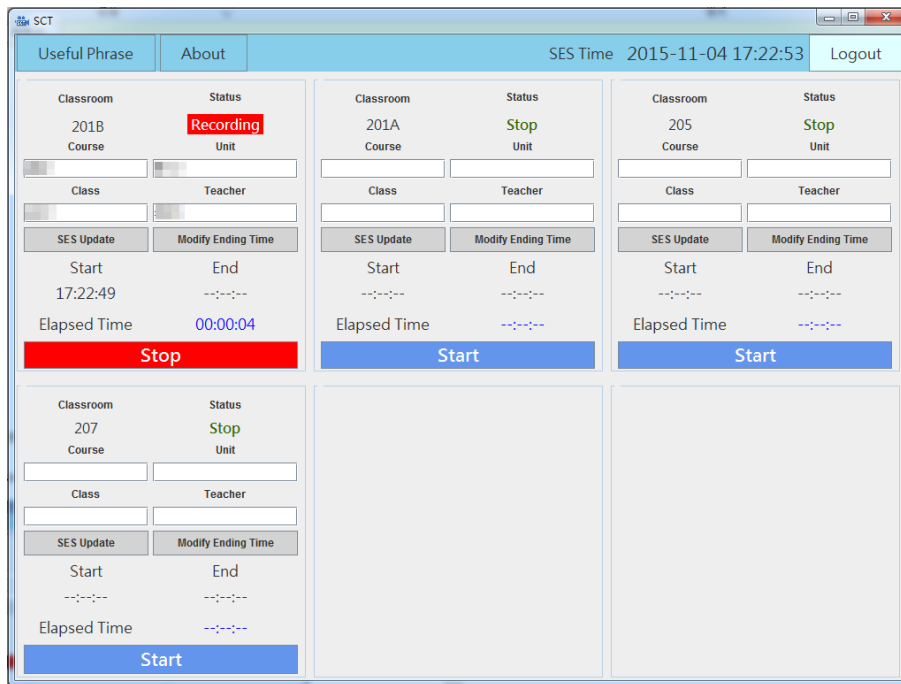


Step 5: you can find SCT perform file under BlueEyes Technology



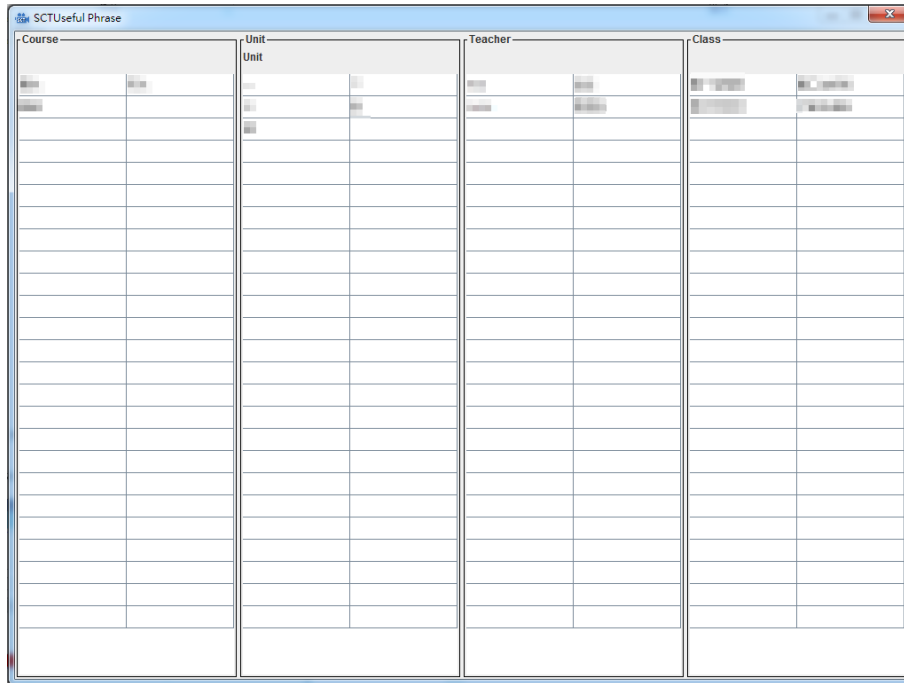
3.4 Operating interface

It shows phrases setting, classroom, about SCT, SES and logout



3.4.1 Phrases setting

You can edit lesson, unit, teacher and class here.



3.4.2 Class information

It shows name of class, status of classroom, lesson, unit, teacher, class, start time, finish time, passing time, click start and click finish.

Classroom	Status
201B	Recording
Course	Unit
<input type="text"/>	<input type="text"/>
Class	Teacher
<input type="text"/>	<input type="text"/>
SES Update	Modify Ending Time
Start	End
17:22:49	--:--:--
Elapsed Time	00:00:37
Stop	

3.4.2.1 Phrase

You can edit phrase and sent the revising to SES.

3.4.2.2 Modify finish time

You can modify finish time here.

3.4.3 About SCT

It shows the version of SCT.



3.4.4 SES time

It shows the time of SES, including date and time.

SES Time 2015-11-04 17:22:53



The time is shows not real time but connecting time.

3.4.5 Logout

Click logout to logout SCT PC version, other users can login.

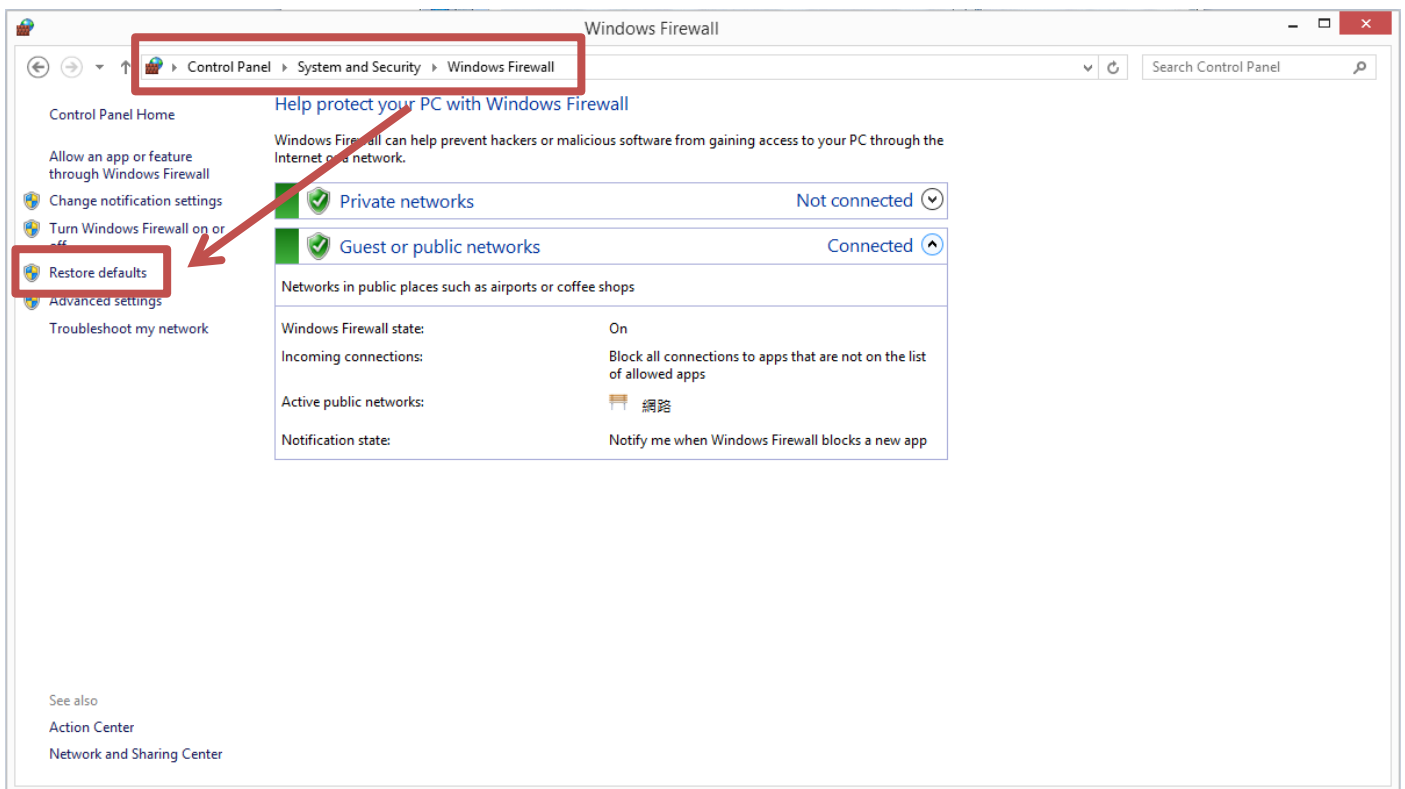
Logout

4. Q&A

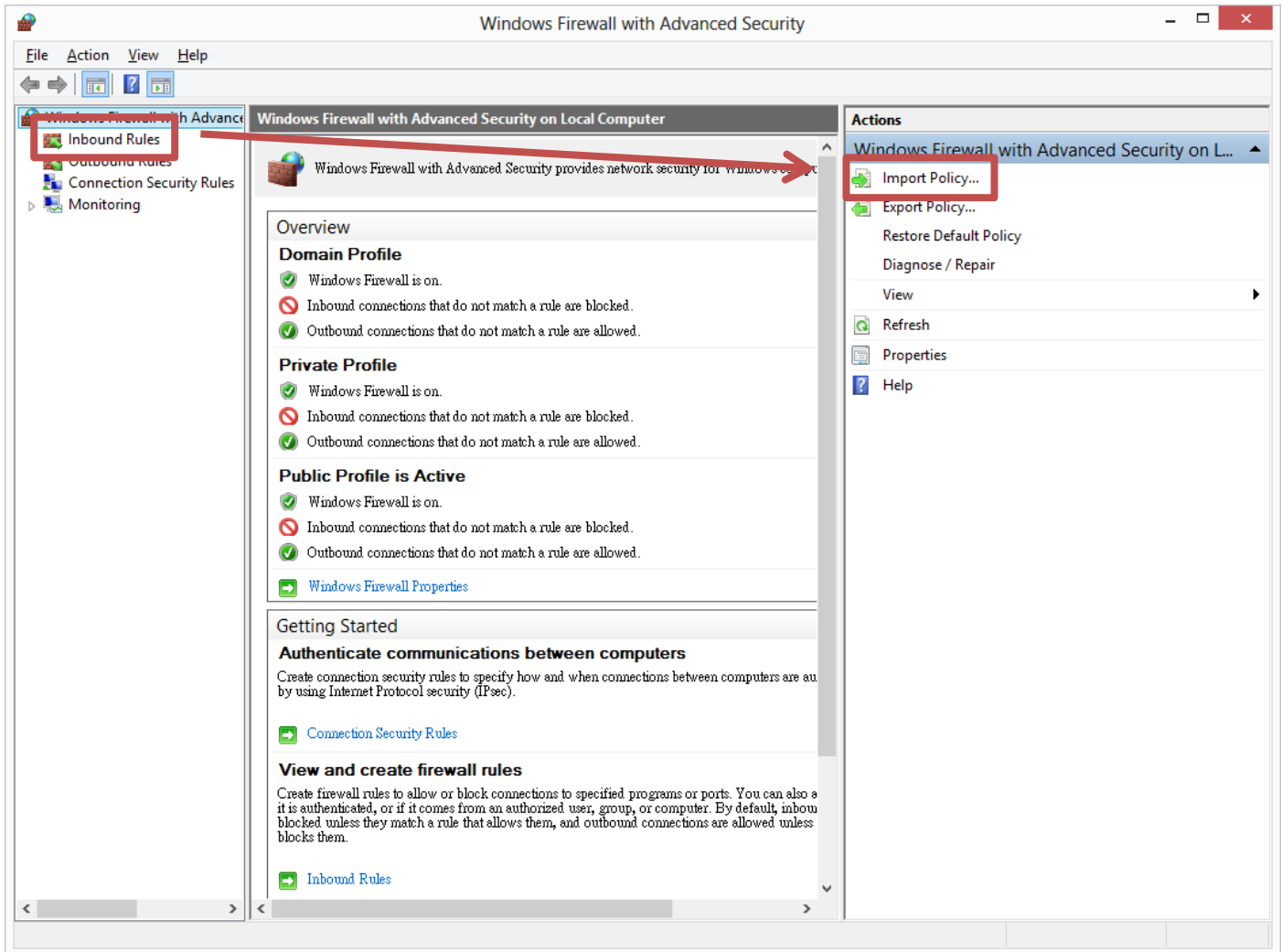
【 Question 1 】 How to add SCT connecting rule on Windows 7 fire wall

【 Answer 】

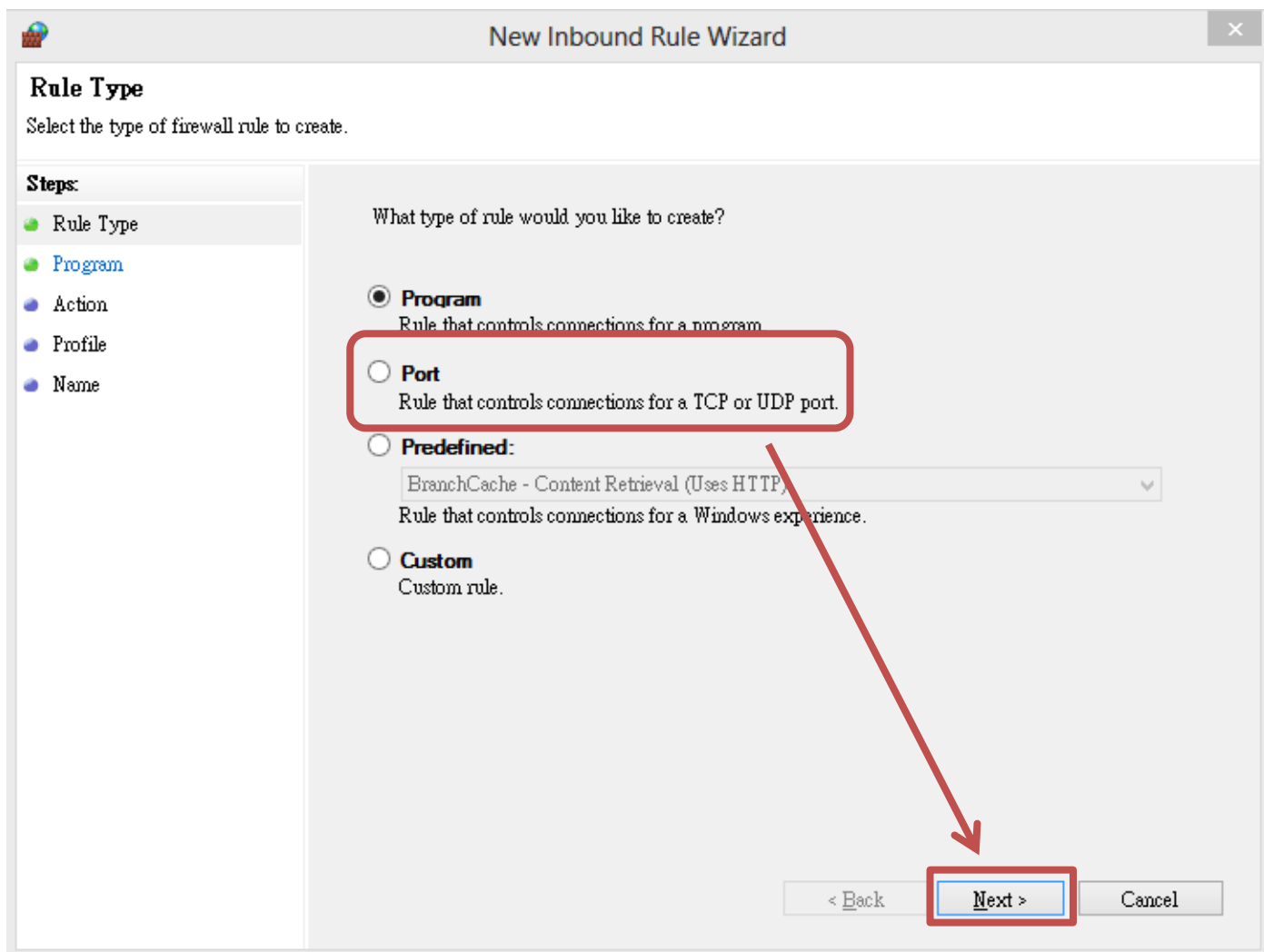
Control panel → system and security → Windows firewall



Inbound rules → import policy



Port→click next.



Choose TCP → specific local ports 9999 → click next.

New Inbound Rule Wizard

Protocol and Ports
Specify the protocols and ports to which this rule applies.

Steps:

- Rule Type
- Protocol and Ports
- Action
- Profile
- Name

Does this rule apply to TCP or UDP?

TCP

UDP

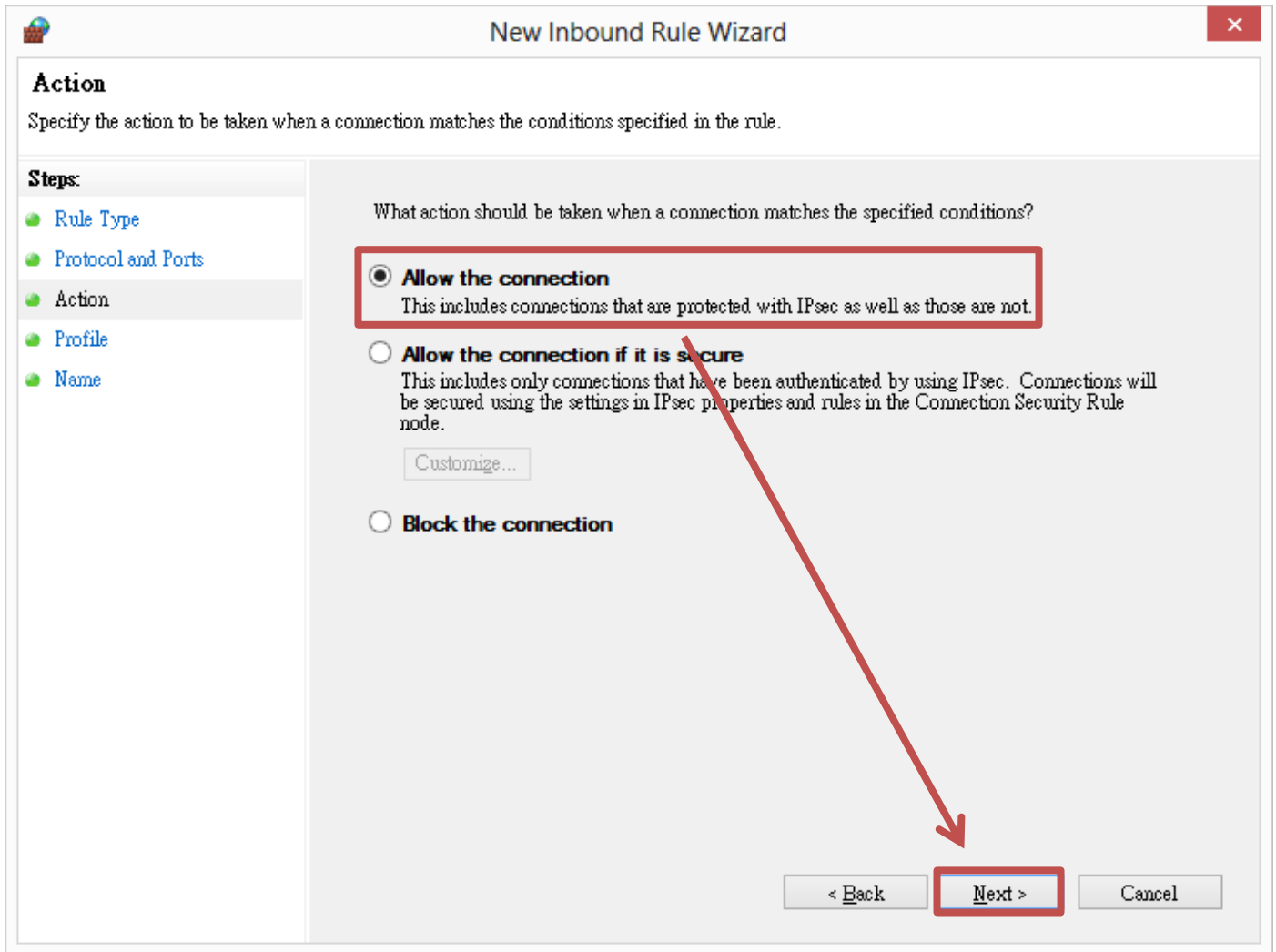
Does this rule apply to all local ports or specific local ports?

All local ports

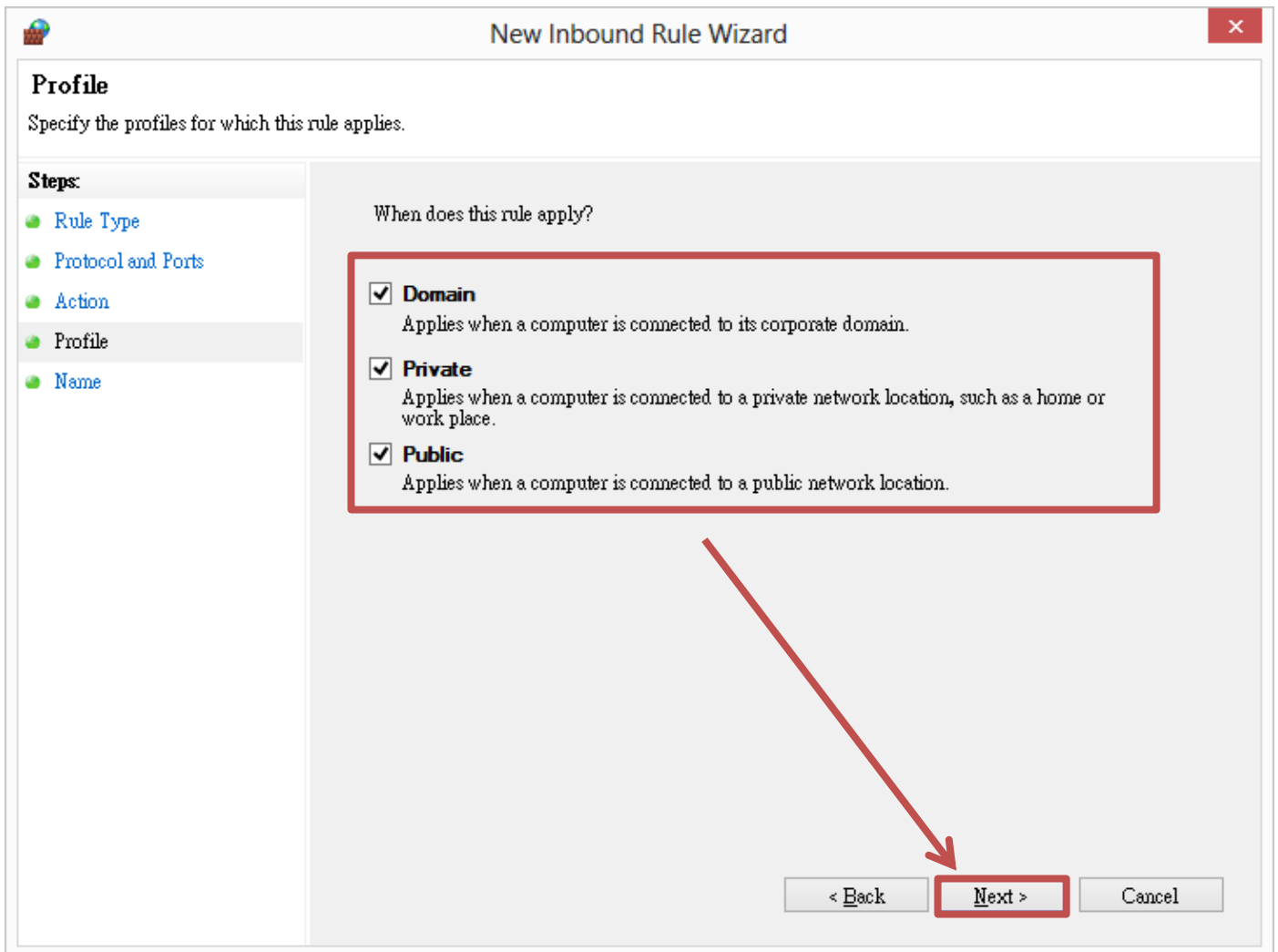
Specific local ports:
Example: 80, 443, 5000-5010

< Back **Next >** Cancel

Allow the connection → click next.



Domain, private and public → click next.



Name: SCT → click finish.

New Inbound Rule Wizard

Name
Specify the name and description of this rule.

Steps:

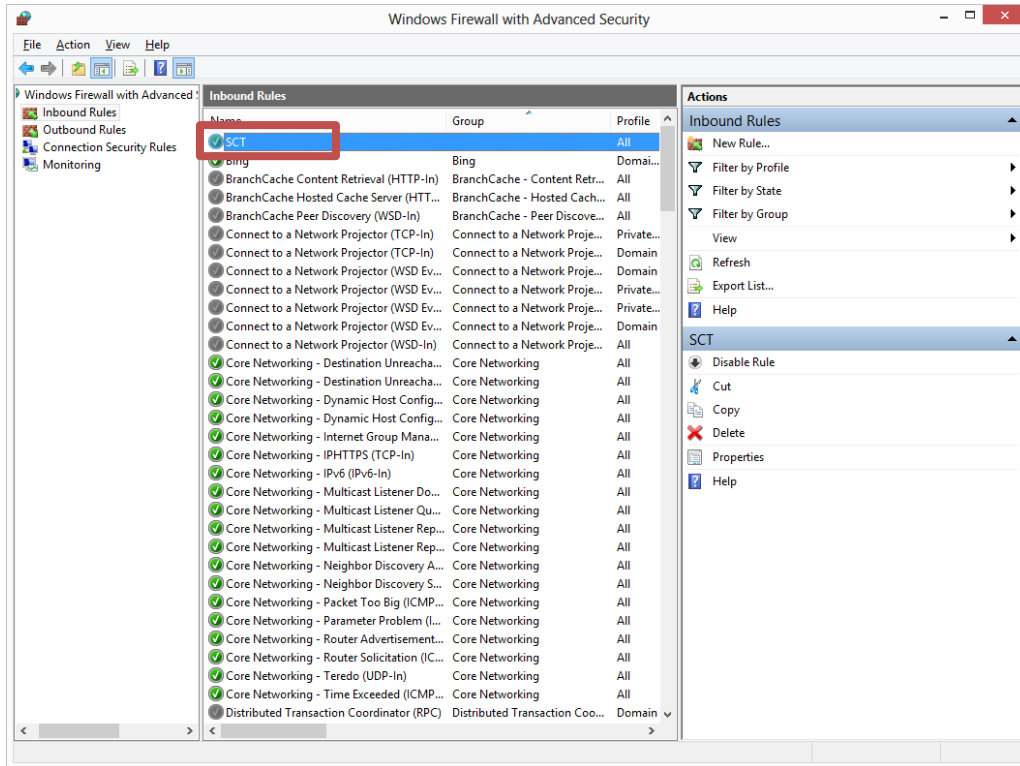
- Rule Type
- Protocol and Ports
- Action
- Profile
- Name

Name:
SCT

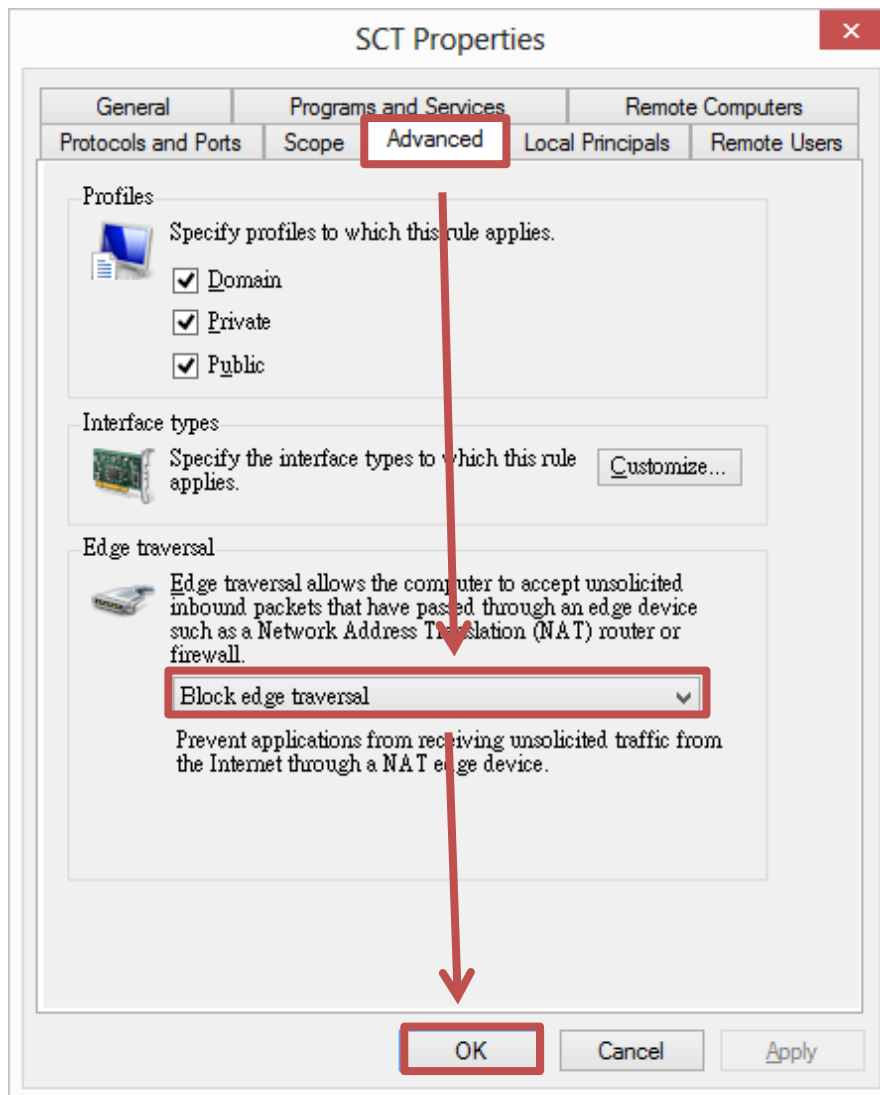
Description (optional):

< Back **Finish** Cancel

Click right bottom on SCT and choose content.



Advanced → block edge traversal → ok



×-×

本手冊內容到此為止，感謝您的耐心閱讀

Note

Note

BlueEyes[®]
<http://www.BlueEyes.com.tw>