

BlueEyes[®]

SES One

Lecture Recording Software

Operation Manual

Version 2.23.9.23

www.BlueEyestech.com



Operation manual

□ SES One

Thank you for using the product of BlueEyes Technology.

The manual will introduce the product of BlueEyes Technology. Please read the manual before you start using the product.

Though the information in the manual has been verified before publish, the actual specification should be based on the actual shipment. BlueEyes Technology doesn't have to guarantee, proclaim or declare for the content, along with other purpose. In addition, the product specification and information that mentioned in the manual is for reference only. The content might be update at any time without notice. If there is any mistake of the information, including software, firmware, and hardware that mentioned in the manual BlueEyes Technology has no responsibility for the mistake.

Please reach BlueEyes website to get the upgrade of the product specification, our company will not notice you. If you want to get the latest product information, operation manual, firmware, or you have any question to the products of BlueEyes Technology, please contact your local agent or go to the official website of BlueEyes Technology for further information.

It is not allowed to copy/ use the content or to change the information and publishing of the manual without BlueEyes Technology's written consent.

Copyright 2015 BlueEyes Technology Inc. All Rights Reserved.

BlueEyes Technology Corp.

Add: 7F-3, No.200, Sec. 4, Wenxin Rd., North District, Taichung City 40462, Taiwan

TEL: +886 4 2297 0977 ext.293

Fax: +886 4 2297 0957

E-mail : sales@blueeyesTech.com

Website: www.blueeyesTech.com



Index

1. Software installation.....	3
1.1 Functions	3
1.2 Install system	3
1.3 Version.....	3
1.3.1 Free version	3
1.3.2 License version	3
1.4 Installation interface.....	5
1.5 Perform interface	8
2. Interface	10
2.1 Function bar	11
2.1.1 Settings	11
2.1.1.1 Saving location.....	12
2.1.1.2 iCam settings	12
2.1.1.3 Parameter Setting.....	13
2.1.2 About	13
2.1.3 Shutdown.....	14
2.2 Real-live view.....	14
2.3 Relative information	15
3. Q&A.....	16
【 Question 1 】 The format of the film ?	16
【 Question 2 】 Why the file is 30 minute?.....	16
【 Question 3 】 SES One advanced sharing settings	16

1. Software installation

1.1 Functions

- Simple manipulation.
- Full HD 1080p which is like watching blue-ray DVD.
- Supported for recording and watching live view at the same time.
- Supported for iCam720/1080 and iCam1080 digital camera.
- The film can be played at STB and PC repeatedly.
- The film can save at FL.
- The film can be edited by Montage.
- Automatically transform the file.
- SES system can connect with LOL.
- The film can be make into DVD.
- We recommended you install on Microsoft Windows 7/8 operating system.

1.2 Install system

Microsoft Windows 7 or Windows 8.

1.3 Version

1.3.1 Free version

- There is an advertisement about 30 seconds when you start the software.
- Produce each 30 minutes.

1.3.2 License version

- No advertisement during using the software.
- Produce each 4 hours.

SES One

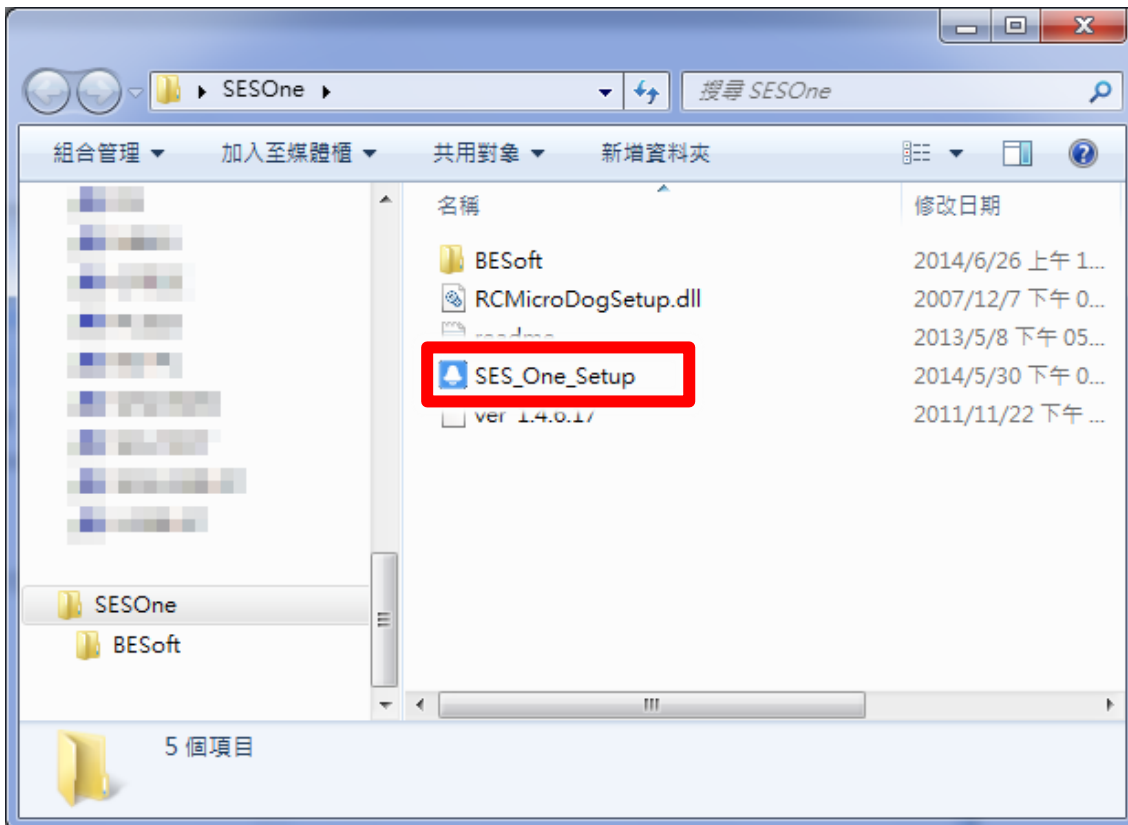
version	Free	License
Manual Recording	<input checked="" type="checkbox"/>	<input checked="" type="checkbox"/>
Class Information	<input checked="" type="checkbox"/>	<input checked="" type="checkbox"/>
Live View	<input checked="" type="checkbox"/>	<input checked="" type="checkbox"/>
Volume Control	<input checked="" type="checkbox"/>	<input checked="" type="checkbox"/>
Advertisement	30 seconds advertisement when you start the software	No advertisement
Recording File	Produce each 30 minutes.	Produce each 4 hours.



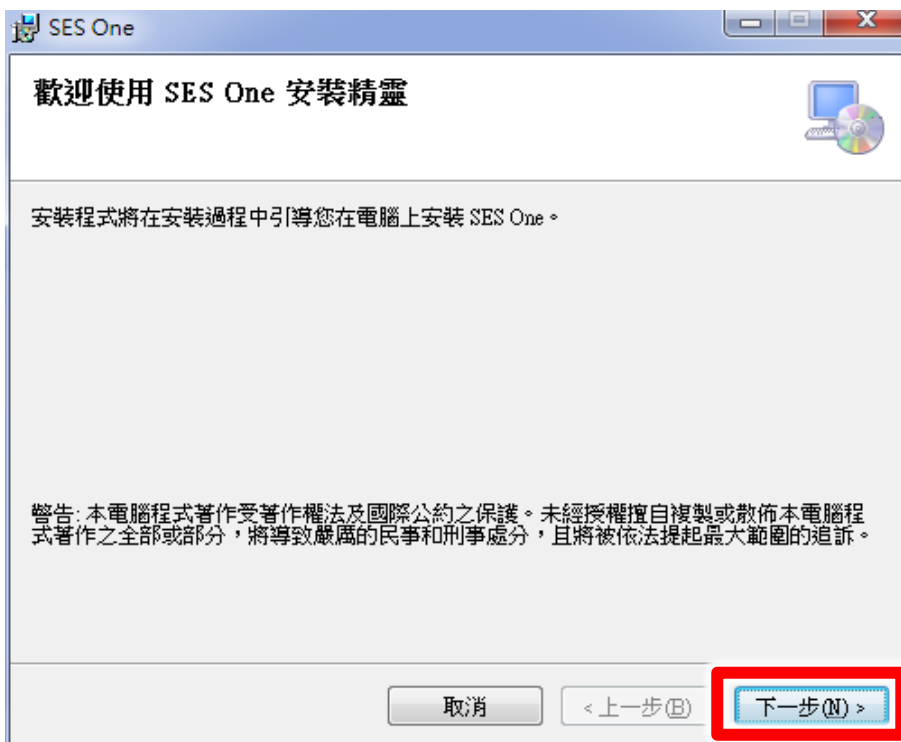
You must insert USB Key, if you use license version.
Please call us, if you have any problem. +886 (4) 2297 0977

1.4 Installation interface

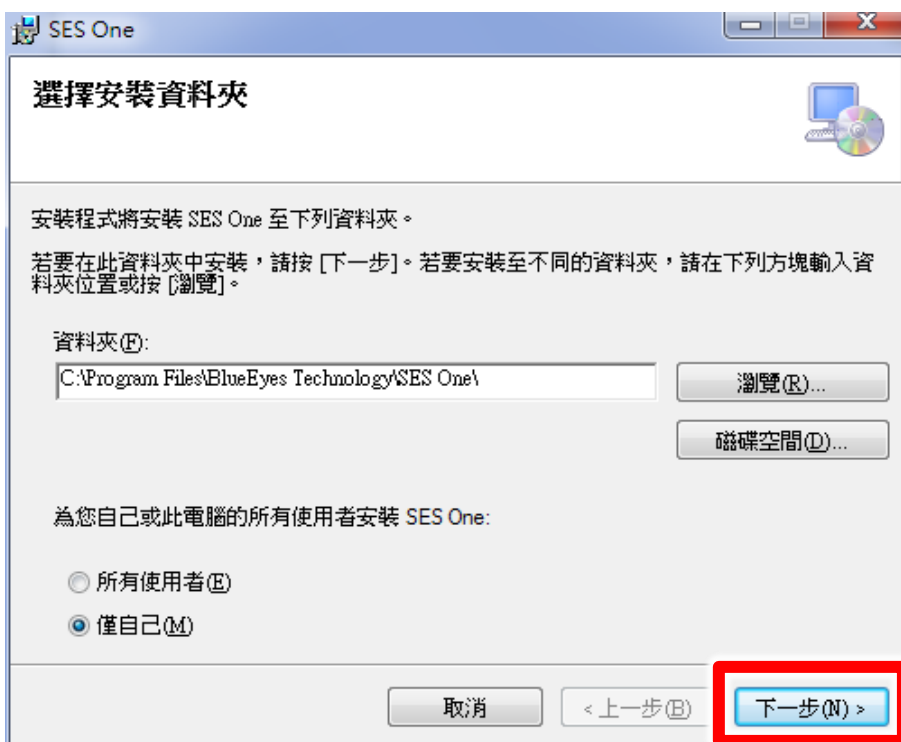
Step 1: click SES_One_Setup (.exe) to perform.



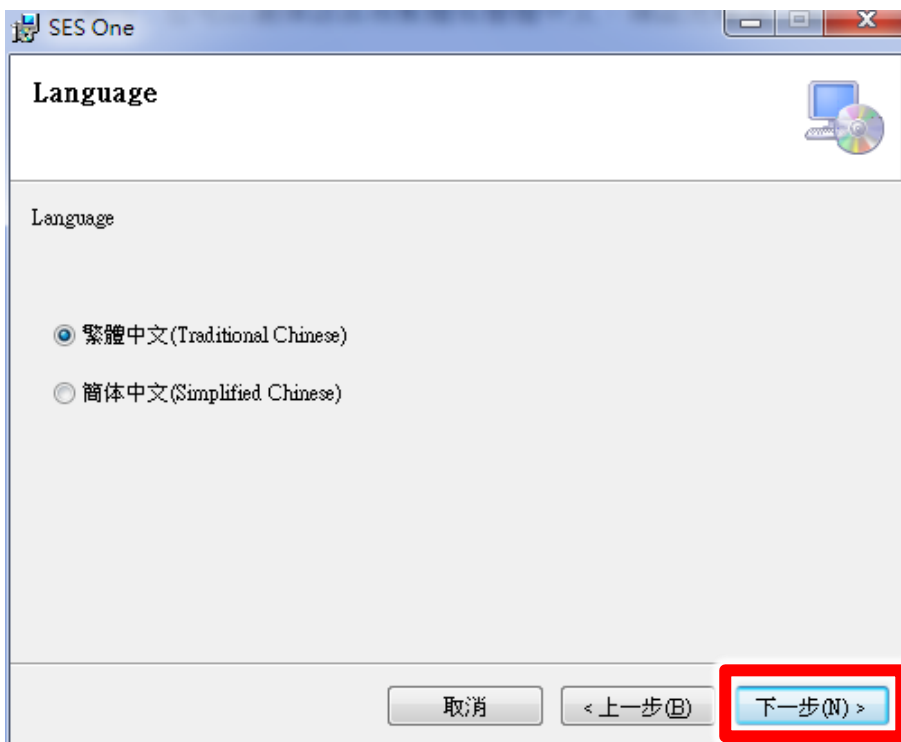
Step 2: click "next".



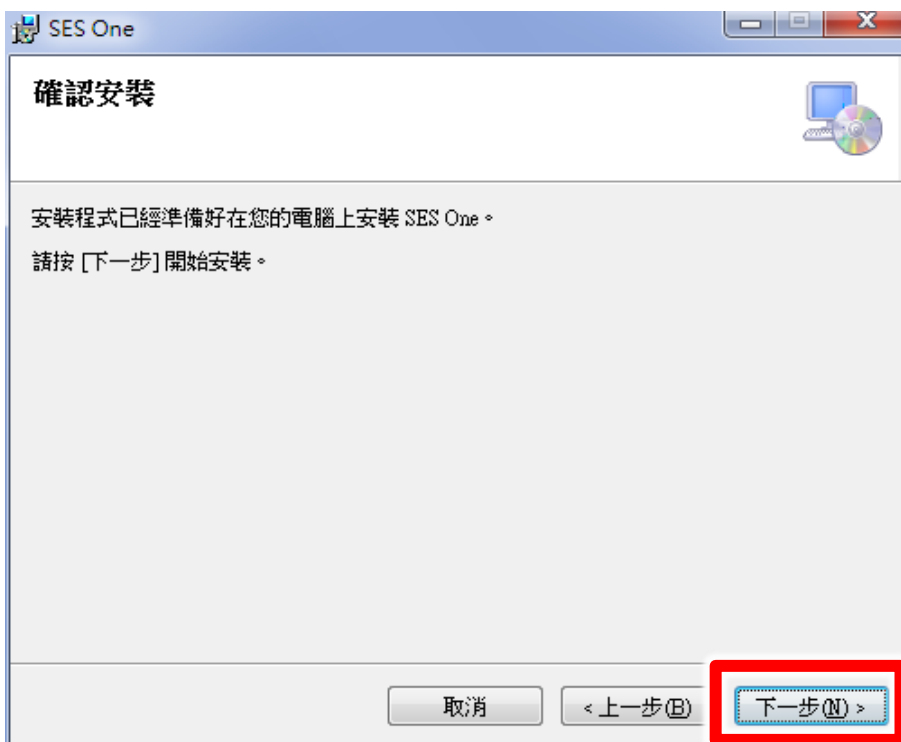
Step 3: choose the location of SES One, default is C:\Program Files\BlueEyes Technology\SES_One\.



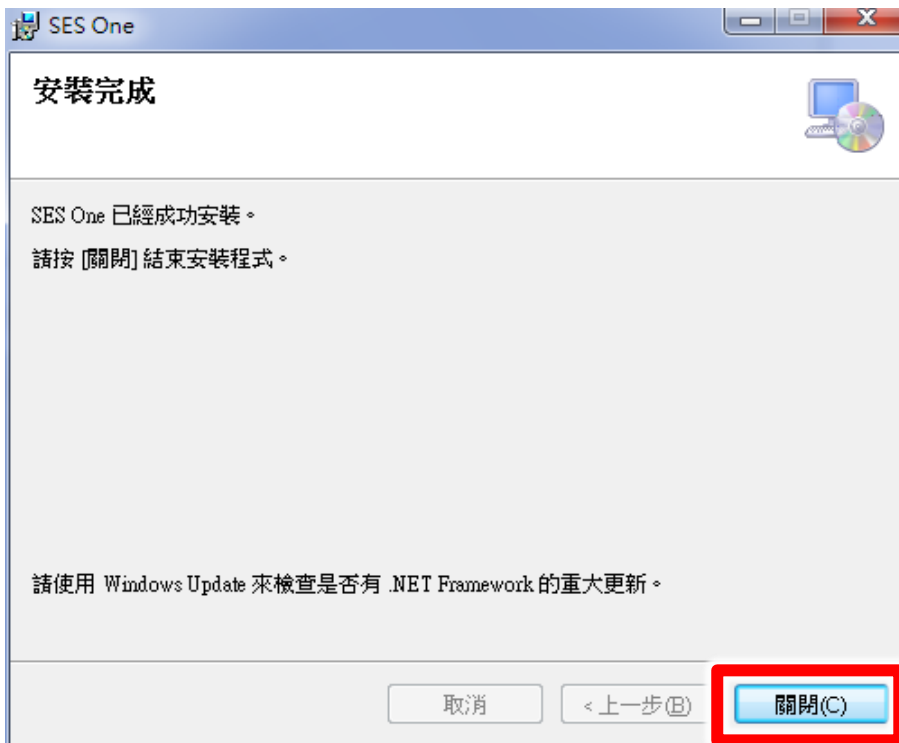
Step 4: choose language, traditional Chinese or Simplified Chinese.



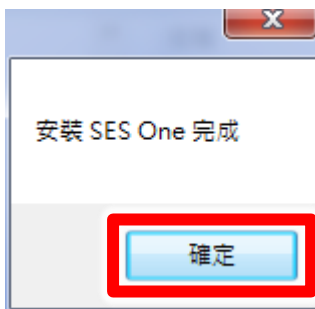
Step 5: click next to install SES One software.



Step 6: after finishing installation, click "close".

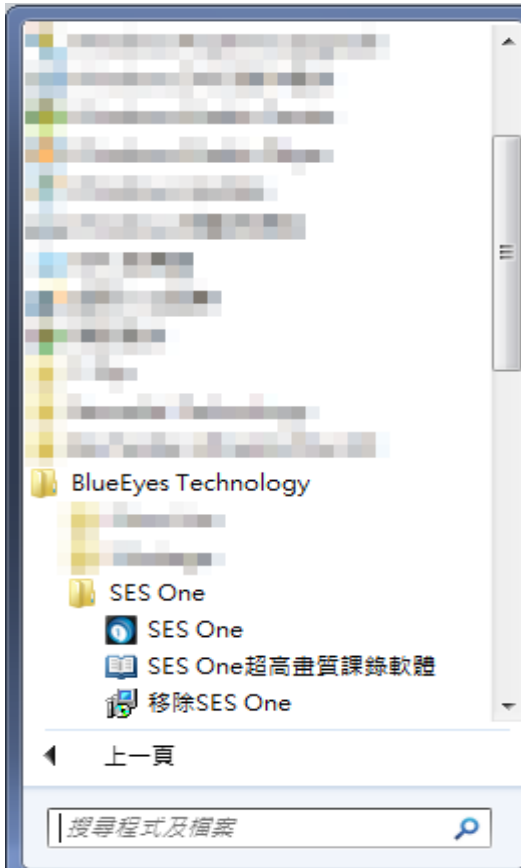


Step 7: click "yes".



1.5 Perform interface

Step 1: find BlueEyes SES One under BlueEyes Technology.



Step 2: you can book SES One on function bar.



Step 3: click SES One to perform the program.



Step 4: enter SES One (free version).



There are 30 seconds for advertisement if you using SES One (free version).

2. Interface



- A Function bar (settings, language, about)
- B Real time image
- C Relative information

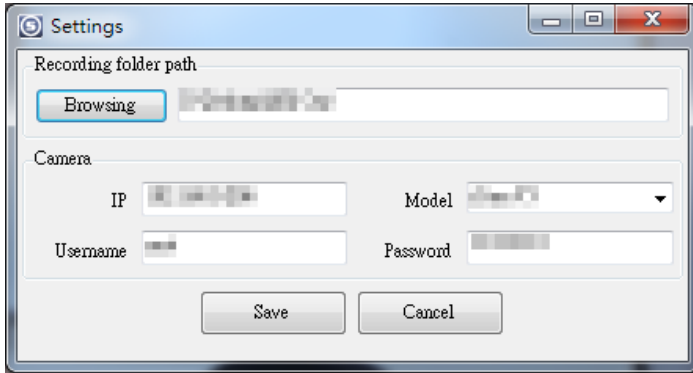
2.1 Function bar

It shows settings, language, about and shutdown.

Settings Language About Exit

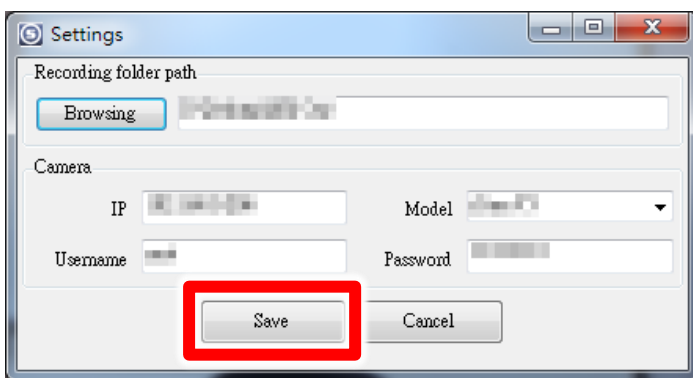
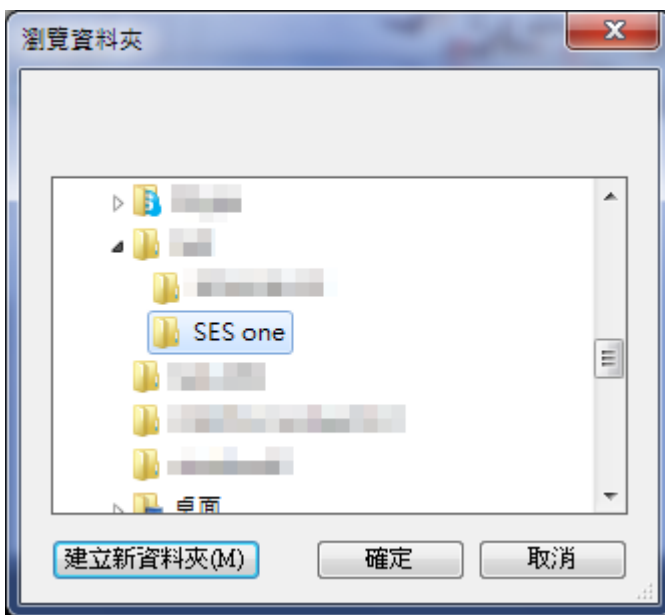
2.1.1 Settings

It shows saving location and iCam settings.



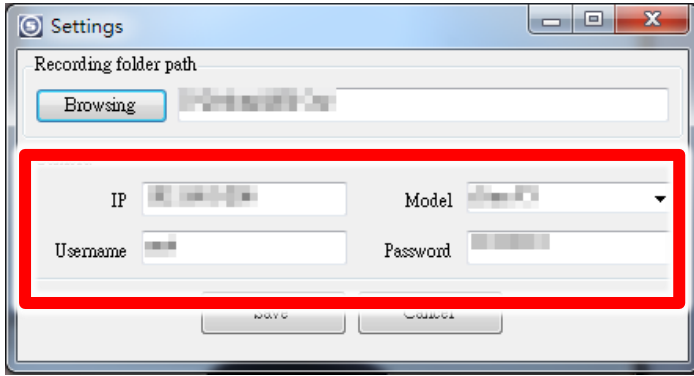
2.1.1.1 Saving location

You can choose the saving location of film.



2.1.1.2 iCam settings

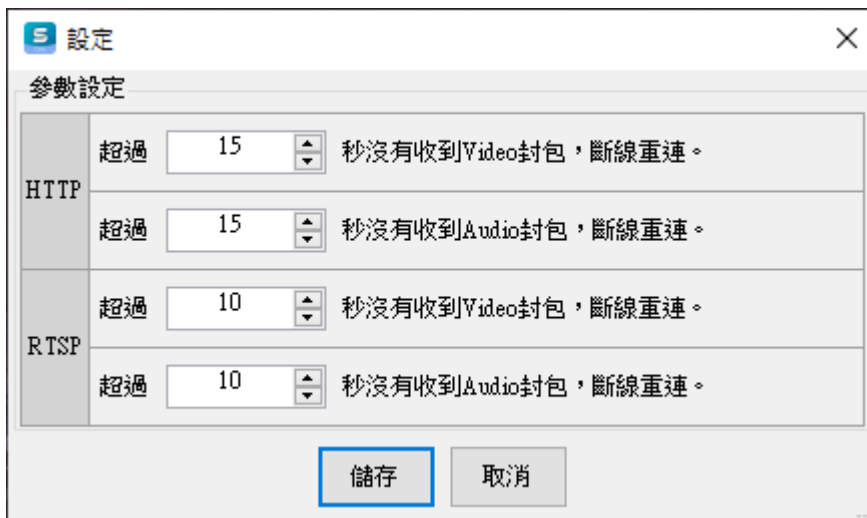
You can set the related settings for camera, including IP, username, password and model.



Please contact us if you have any question. +886 (4) 2297 0977

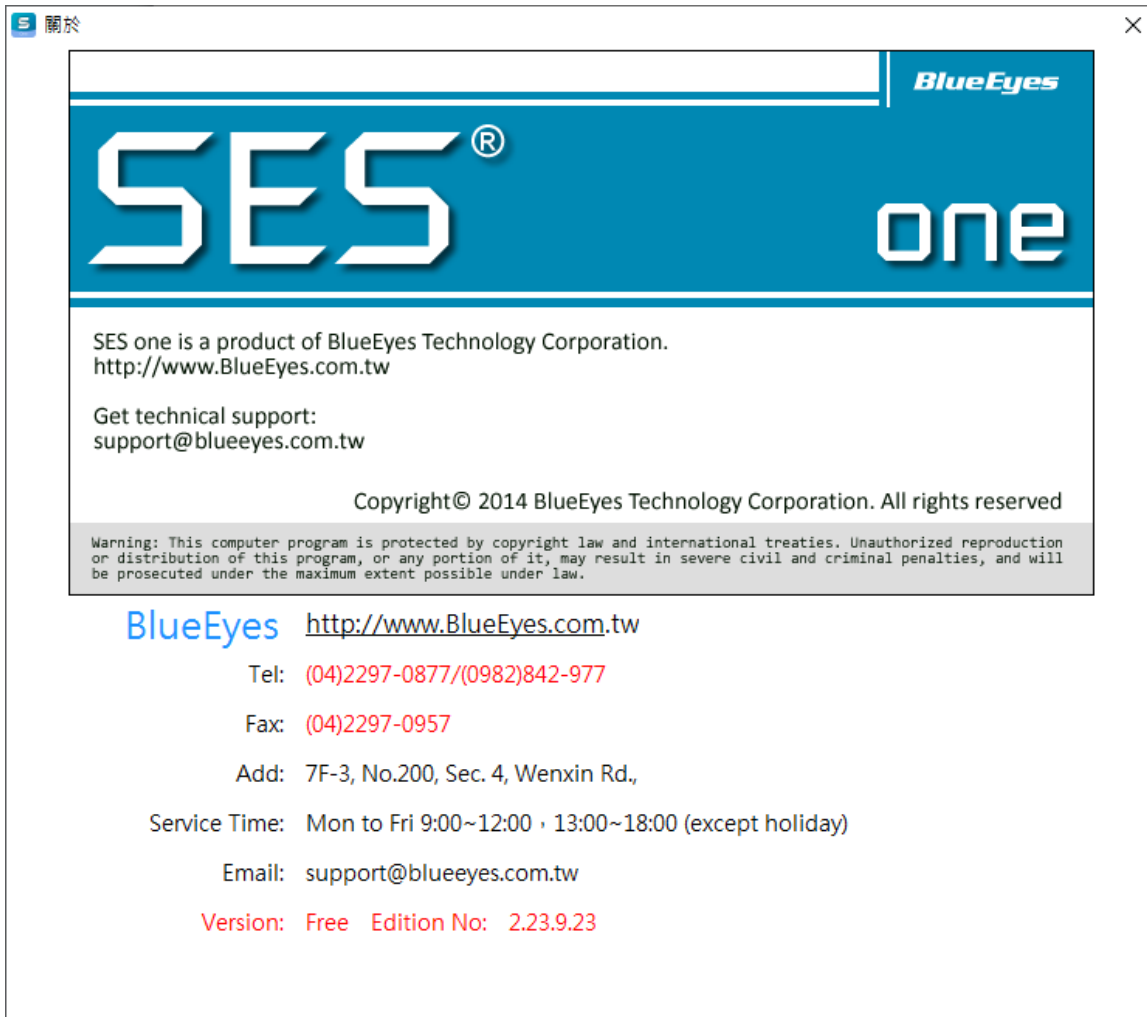
2.1.1.3 Parameter Setting

You can set the number of seconds that Video packets and Audio packets will be delayed in HTTPS and RTSP streaming connections. (This is an advanced setting, please do not change it unless you have special needs.)



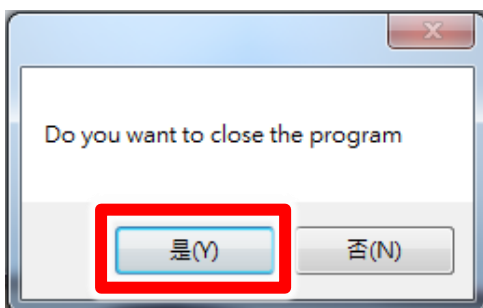
2.1.2 About

If you have any question please contact us by phone call or email.



2.1.3 Shutdown

Click “shutdown” to leave the software.



2.2 Real-live view

You can watch live view of the classroom to make sure the class is being recorded.



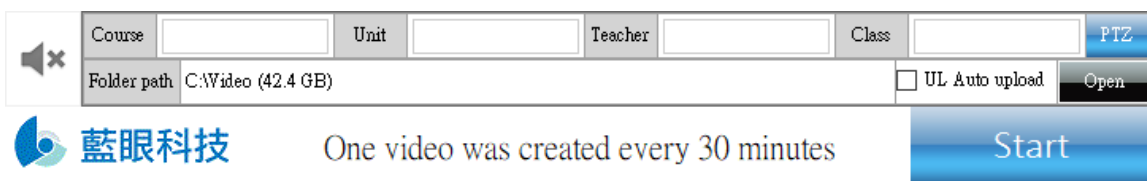
Below the monitor, it shows the status of recording.

For example: Recording [1920x1080]

It means the camera is connecting and resolution is 1920x1080.

2.3 Relative information

It shows lesson, unit, teacher, class, saving location, voice on/ off, begin recording and stop recording.



lesson


unit

teacher

class

You can revise the name of it. The limitation for the words is 10.

Saving location You can choose the saving location of film.

Voice on/ off You can switch the volume, click  to turn into mute.

Class begin Click here to begin the recording

stop

[Click here to stop the recording](#)

PTZ Control Panel

Provides options for PTZ direction control, Speed, Zoom, Preset Points, and Tracking Mode.



3. Q&A

【 Question 1 】 The format of the film ?

【 Answer 】 The format of the film which recorded by SES One is MKV.

【 Question 2 】 Why the file is 30 minute?

【 Answer 】 The film of SES One (free version) can only be 30 minute. If you want there are only 如 one film during your recording, please update it to license version.

【 Question 3 】 SES One advanced sharing settings

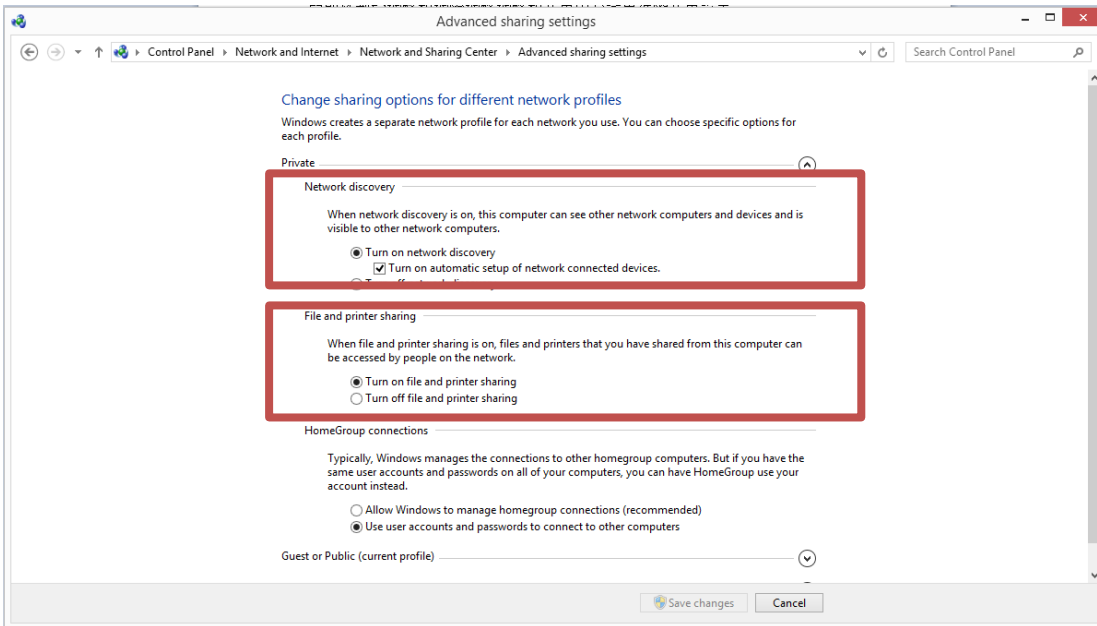
【 Answer 】 Please follow the settings while set SES One:

1. Change sharing options for different network profiles

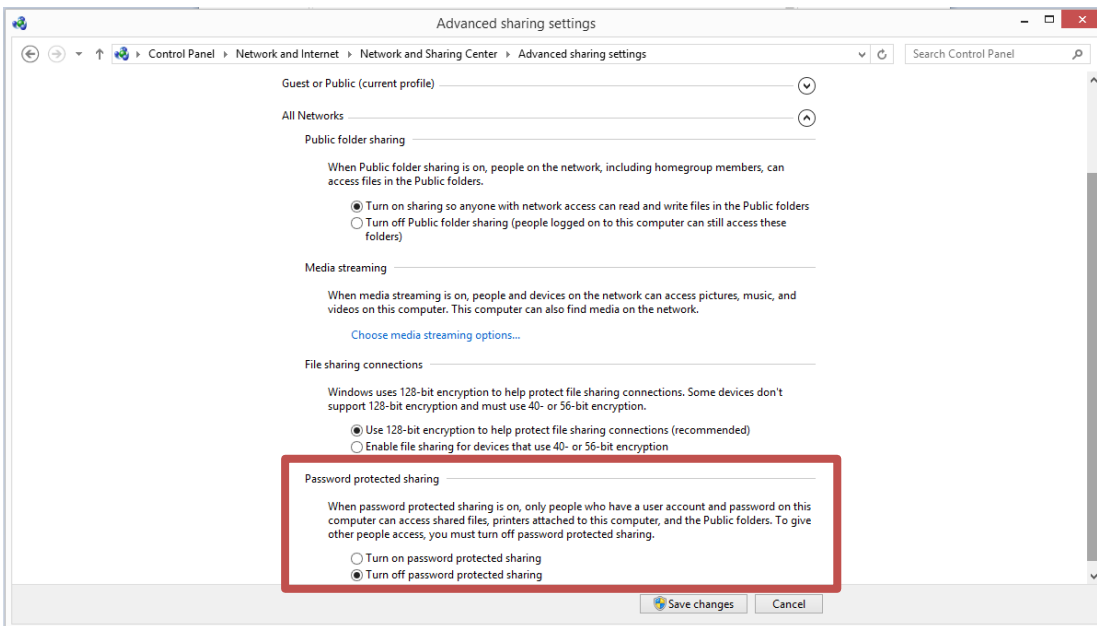
Control panel → network and internet → network and sharing center → advanced sharing settings

a. Turn on network discovery

b. File and printer sharing

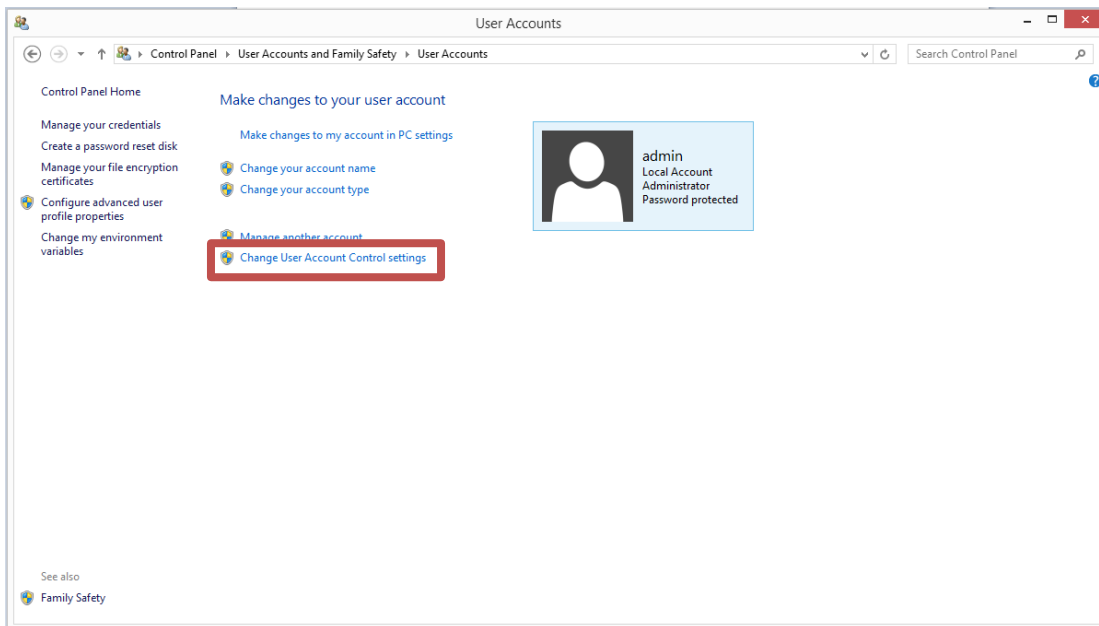


c. Turn off password protected sharing

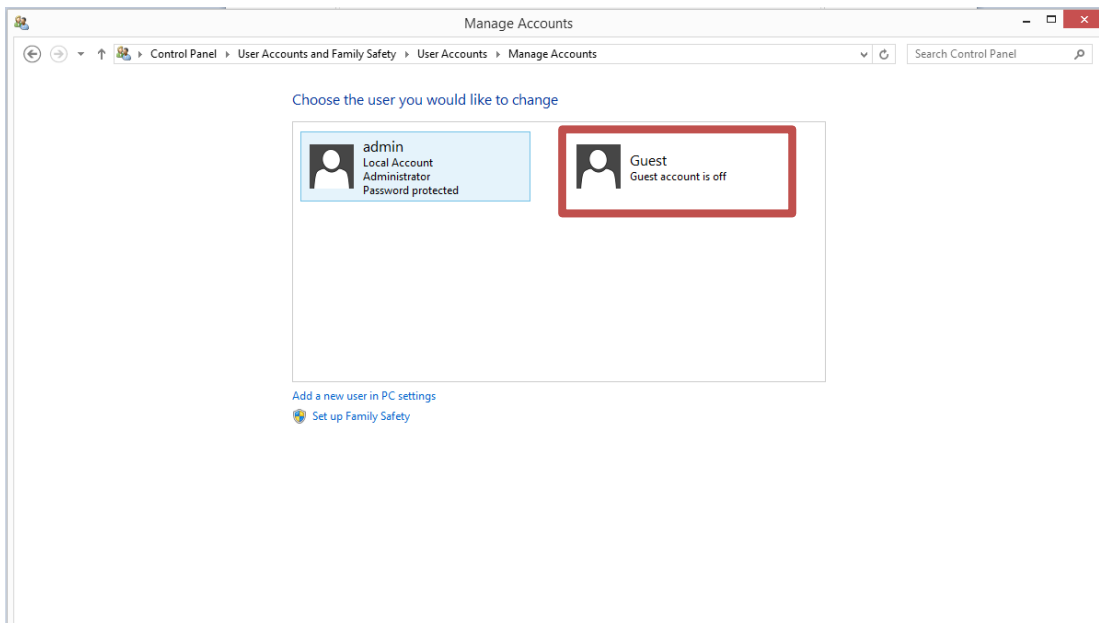


2. Enable username guest

Control panel → user accounts and family safety → change user account control settings

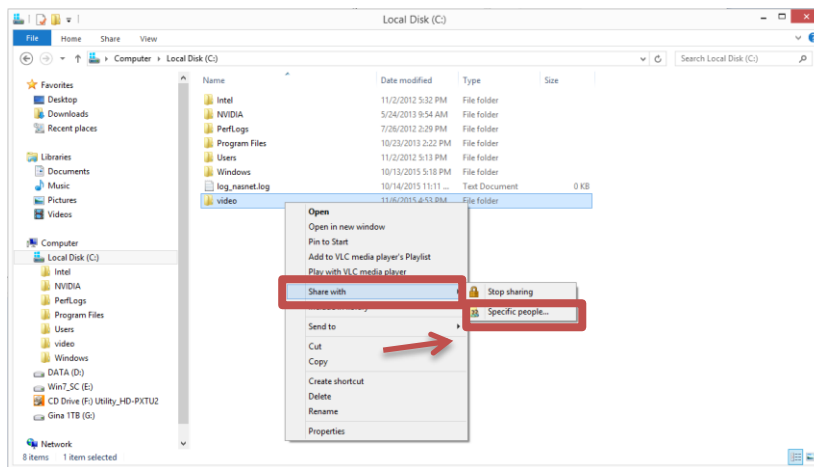


Click Guest

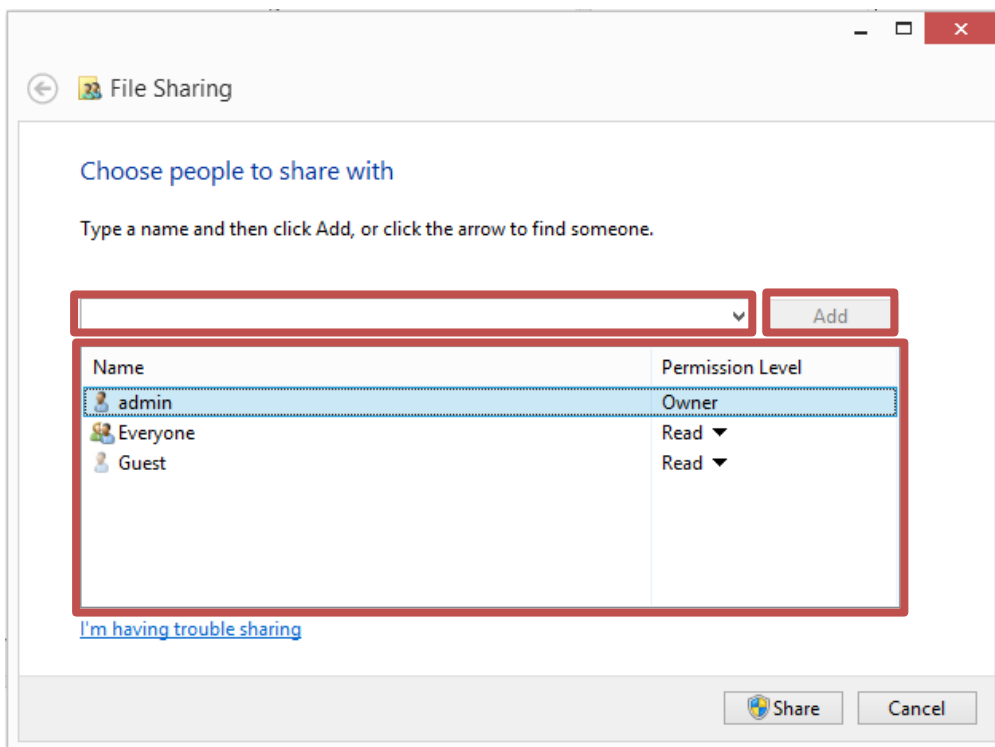


2. Setting sharing people

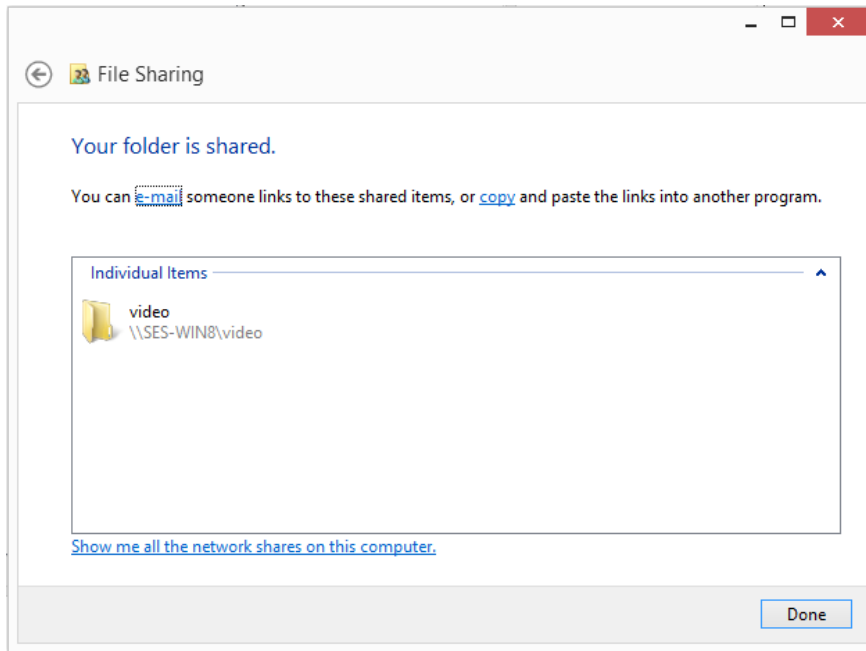
video → share with → specific people



3. Click Everyone and Guest to add.

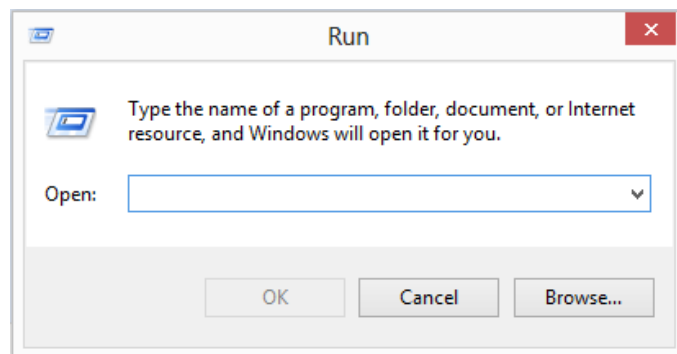


After sharing, there is a folder of file sharing.

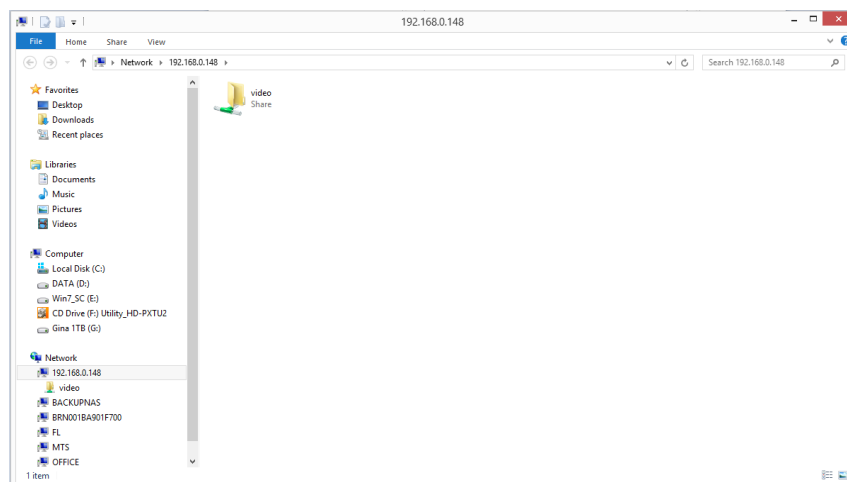


4. Check network sharing

Click windows and R, there is a perform window show up. And enter computer IP.



After setting, there is a video folder.



5. Modify the computer security rule

Download website:

<http://blueeyes.tv/download/fixreg.zip>

login file:

Windows Registry Editor Version 5.00

[HKEY_LOCAL_MACHINE\System\CurrentControlSet\Control\Lsa\]

"everyoneincludesanonymous"=dword:00000001

"NoLmHash"=dword:00000000

"LmCompatibilityLevel"=dword:00000002

[HKEY_LOCAL_MACHINE\System\CurrentControlSet\Services\LanManServer\Parameters]

"restrictnullsessaccess"=dword:00000000

"AutoShareWks"=dword:00000000

[HKEY_LOCAL_MACHINE\SOFTWARE\Microsoft\Windows\CurrentVersion\Policies\System]

"LocalAccountTokenFilterPolicy"=dword:00000001

Note

BlueEyes[®]
<http://www.BlueEyes.com.tw>